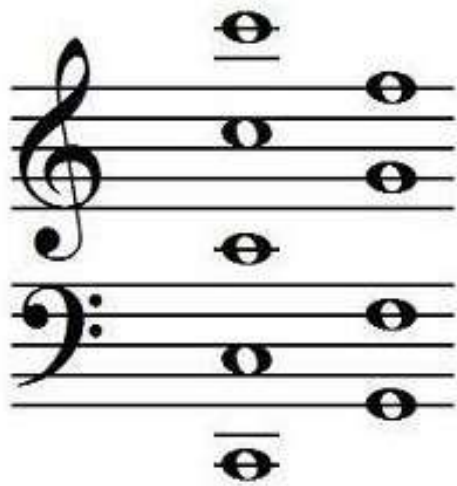


Notação Musical

Altura dos sons



Duração dos sons

SONS

Musical notation on a grand staff (treble and bass clefs) in 4/4 time. The notes are: a half note (SEMI-BREVE), a quarter note (MÍNIMA), an eighth note (SEMÍNIMA), a sixteenth note (COLCHEIA), a thirty-second note (SEMI-COLCHEIA), a sixty-fourth note (FUSA), and a sixty-fourth note (SEMI-FUSA). The notes are grouped by duration. The word "SONS" is written above the staff with a line pointing to the notes. The word "PÁUSAS" is written below the staff with a line pointing to the rests.

SEMI-BREVE	MÍNIMA	SEMÍNIMA	COLCHEIA	SEMI-COLCHEIA	FUSA	SEMI-FUSA
1	2	4	8	16	32	64

PÁUSAS

Compasso

2 , 3 ou 4 = Número de tempos dentro do compasso

2 , 4 ou 8 = Figura que representa cada tempo