

Stone flower

A. Carlos Jobim

(C B \flat)



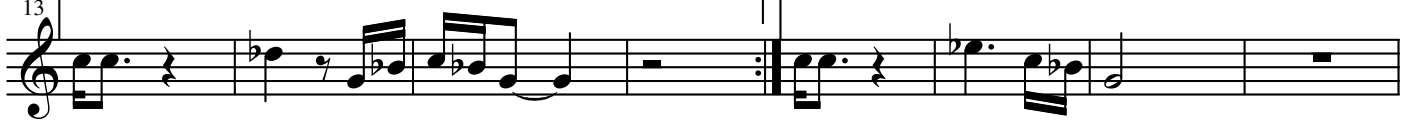
(F E \flat)

A \flat



1 C D \flat (C B \flat)

2 C D \flat (C B \flat)



F7

F7

A \flat 7

A \flat 7

A \flat 7

A \flat 7



E \flat m

E \flat m(maj7)

E \flat m7

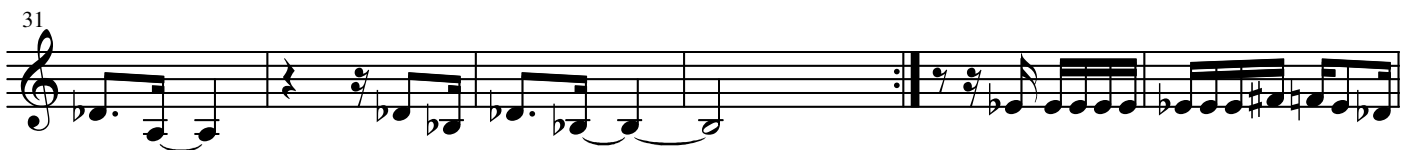
E \flat m6



E \flat $^\circ$

E \flat m7

A \flat 7



37



B7

E

D



47 A7

53 Eb7^{#11}

1 D C D C

2 (D C) E D

59

65 C C

Detailed description: This is a guitar score in treble clef. Measure 47 begins with an A7 chord and contains a melodic line of eighth notes: G4, A4, B4, C5, B4, A4, G4, F4, E4, D4, C4, B3, A3, G3, F3, E3, D3, C3. Measure 53 starts with an Eb7#11 chord and contains a melodic line of quarter notes: Eb4, G4, Bb4, D5, Eb4, G4, Bb4, D5, Eb4, G4, Bb4, D5, Eb4, G4, Bb4, D5. Measure 59 starts with a (D C) chord and contains a melodic line of eighth notes: D4, C4, B3, A3, G3, F3, E3, D3, C3, B2, A2, G2, F2, E2, D2, C2, B1, A1, G1, F1, E1, D1, C1. Measure 65 starts with a C chord and contains a melodic line of quarter notes: C4, E4, G4, C5, B4, A4, G4, F4, E4, D4, C4, B3, A3, G3, F3, E3, D3, C3, B2, A2, G2, F2, E2, D2, C2, B1, A1, G1, F1, E1, D1, C1.