

Michelle

Lenon and
Mc Cartney

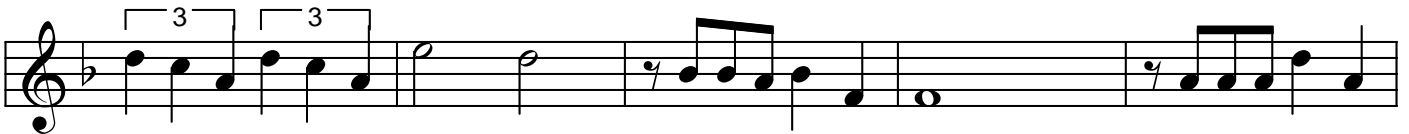
D Gm7 C B \emptyset E7/G# A7 E7/G# A



D Gm7 C B \emptyset E7/G# A7 E7/G# A



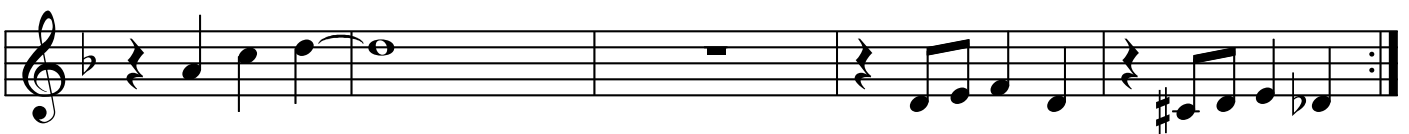
Dm Dm F $\frac{4}{7}$ B \flat Δ A7



Dm Dm Dm/C# Dm/C Dm/B B \flat Gm A



D Gm7 C7 B $^{\circ}$ E7/G# A7



DS ao coda

A Dm A7 Dm Gm Dm Gm A7 D

