

MANHATTAN

Fmaj7

D7

Gm7

C7

Fmaj7 Gm7 A^bdim Am7 A^bdim



Gm7

C7

E7(#5,♭9)

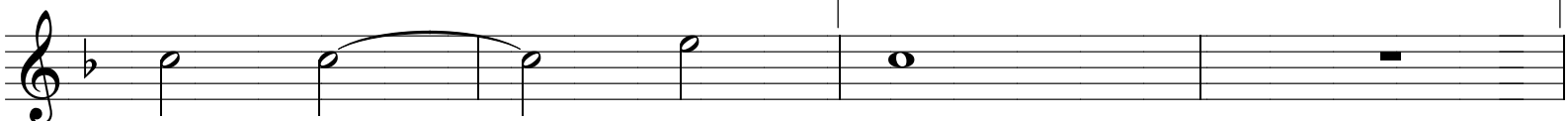
1.

Am7

D7

Gm7

C7



Fmaj7

D7

Gm7

Em7(♭5)

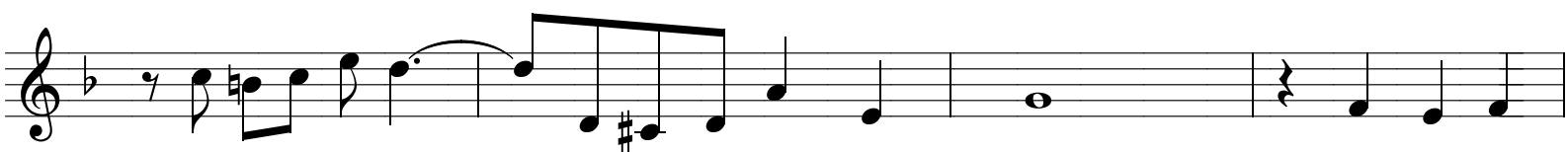
A7

Dm7

A7

Dm7

D7(#9)



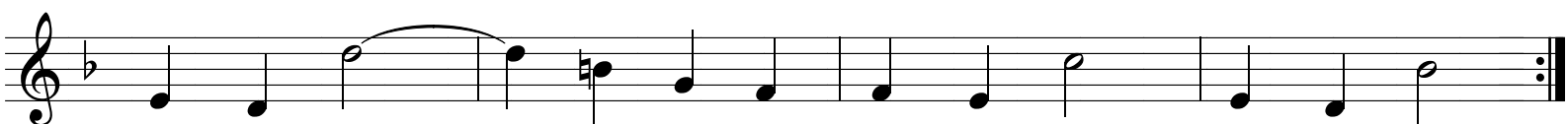
G7

A^b7

G7

Gm7

C7



2.

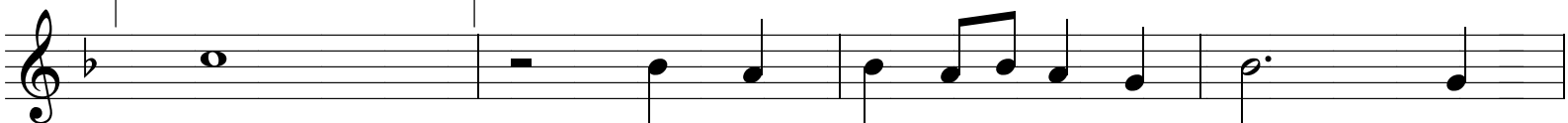
Am7(♭5)

D7(♭9)

Gm7

B^bm7

E^b7



Fmaj7

Dm7

Dm7/C

Bm7(♭5)

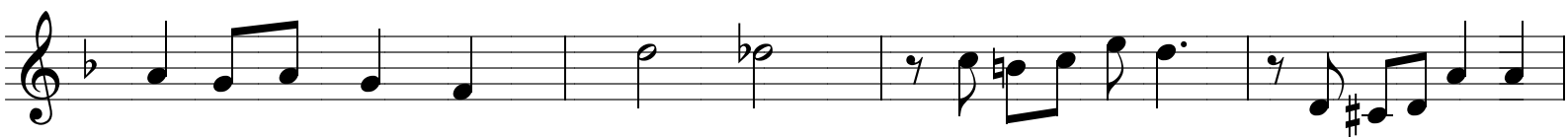
B^bm7

Am7

D7

Gm7

C7



F6

(D7

Gm7

C7)

